

Fasteners Assembly Instructions for SRMX-CHVRLT

Applying for products:

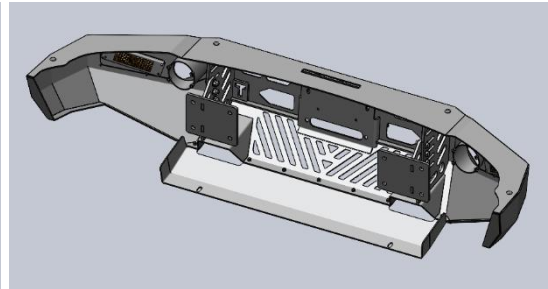
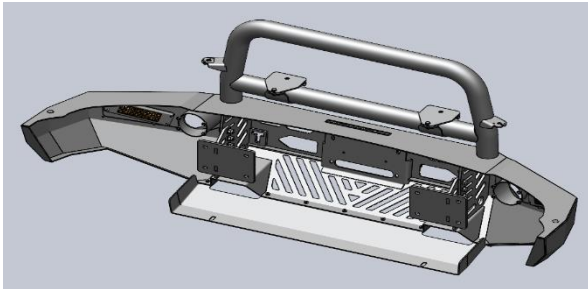
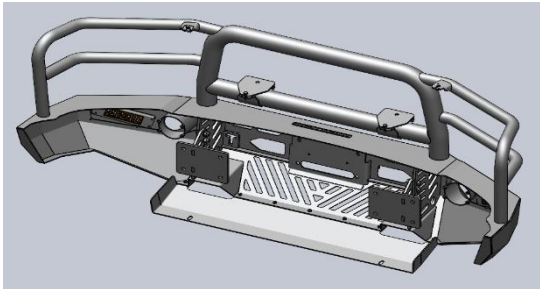
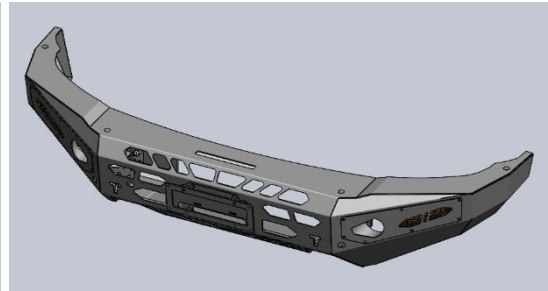
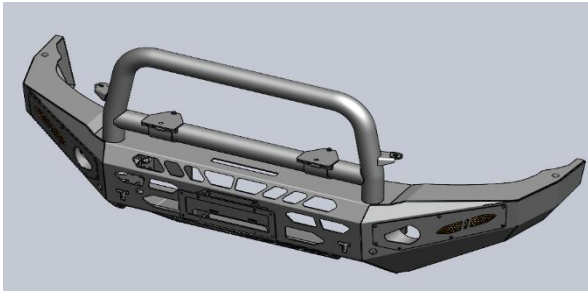
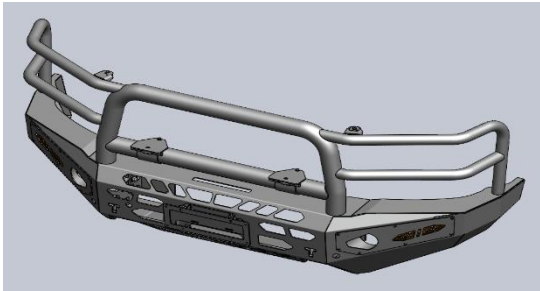
1153 SRMX-CHVRLT-2018-NH

1153 SRMX-CHVRLT-2018-SH

1153 SRMX-CHVRLT-2018-3H

| Part number | Description | Qty/per set |
|-------------|--|-------------|
| AC01 | Hex Head Bolt M12 x 45mmL x P1.25 | 6 |
| AC02 | Nyloc Nut M12 x P1.25 | 6 |
| AC03 | Steel Nord Lock Washer M12 x 13mmID x 19mmOD x 2.2mmT | 6 |
| AC04 | Steel Flat Washer M12 x 13mmID x 26mmOD x 2.2mmT | 12 |
| AC05 | Hex Head Bolt M16 x 30mmL x P2.0 | 4 |
| AC06 | Steel Flat Washer M16 x 17mmID x 30mmOD x 2.5mmT | 4 |
| AC07 | Steel Flat Washer M8 x 8.4mmID x 17mmOD x 2.5mmT | 13 |
| AC08 | Steel Spring Washer M8 | 9 |
| AC09 | M6 x 12mmL x P1 Steel Hex Socket (allen Key) & Domed Head Bolt | 22 |
| AC10 | Hex Head Bolt M8 x 25mmL x P1.25 | 2 |
| AC11 | Steel Spring Washer M6 | 8 |
| AC12 | M4 x 16mmL x P0.7 Hex Socket (allen Key) & Domed Head Bolt | 12 |
| AC13 | Hex Head Bolt M8 x 20mmL x P 1.25 | 9 |
| AC14 | Steel Spring Washer M4 | 8 |
| AC15 | Hex Head Bolt M6 x 25mmL x P1.0 | 2 |
| AC16 | Steel Flat Washer M4 x 4.3mmID x 9mmOD x 0.8mmT | 4 |
| AC17 | Nyloc Nut M4 x P0.7 | 4 |
| AC18 | Steel Flat Washer M6 x 6.6mmID x 15mmOD x 2mmT | 12 |
| AC19 | Nyloc Nut M8 x P1.25 | 2 |
| AC20 | Steel Nyloc Nut M6 x P1.0 | 2 |
| AC30 | Electric Cable Packed | 1 |
| AC31 | Fog Lights (Pair) with Accessories | 1 |
| AC32 | Indicator Lights (Pair) | 1 |

GENERAL VIEW



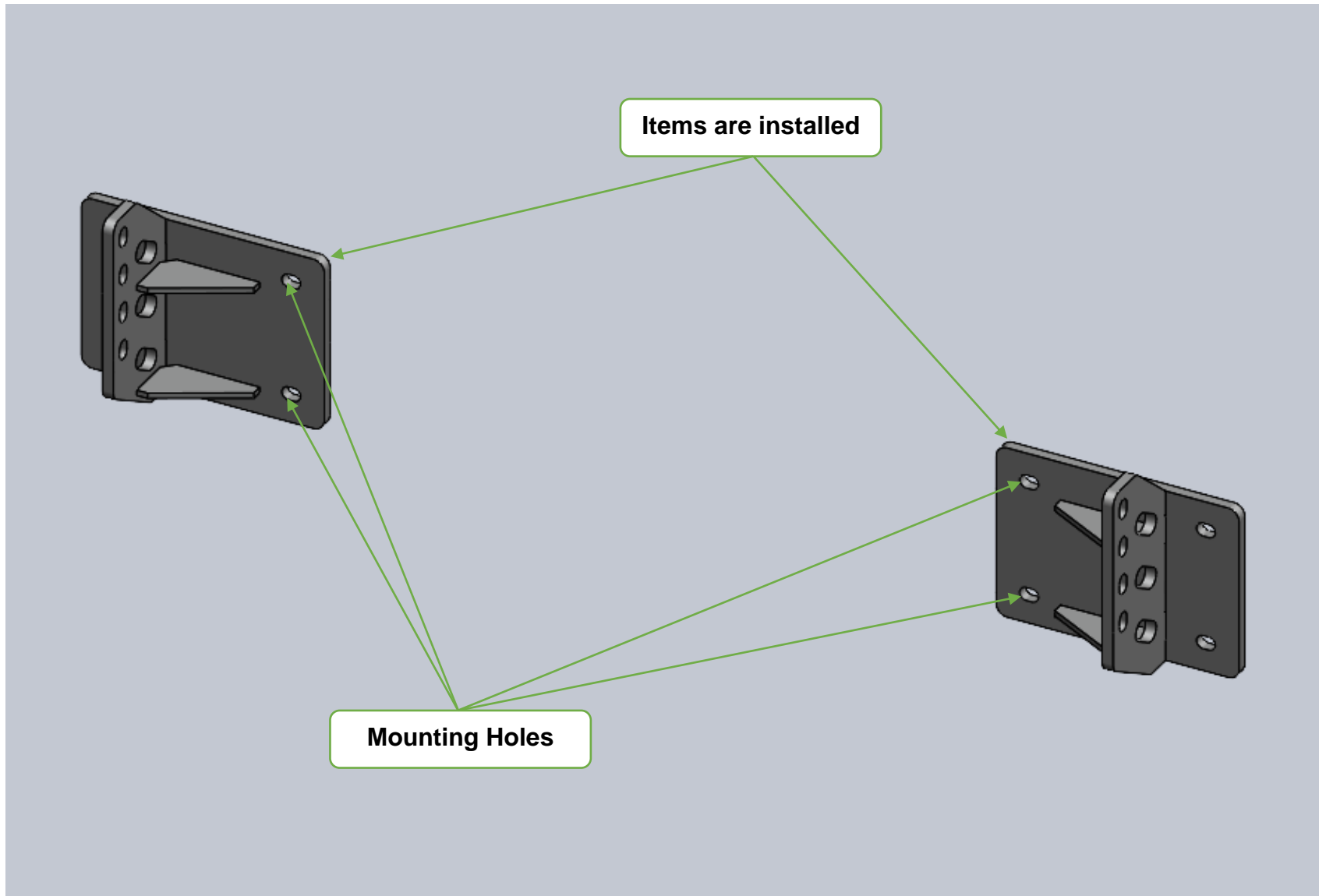
3 HOOP

SINGLE HOOP

NO HOOP

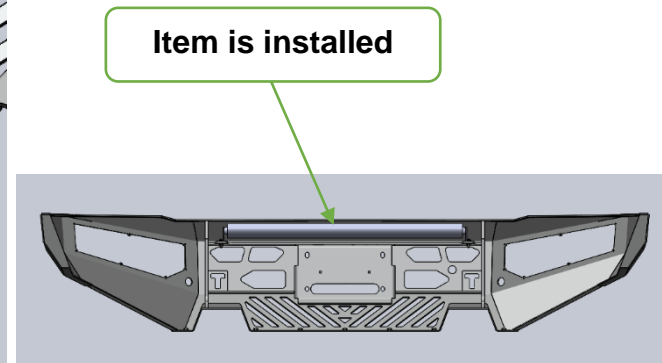
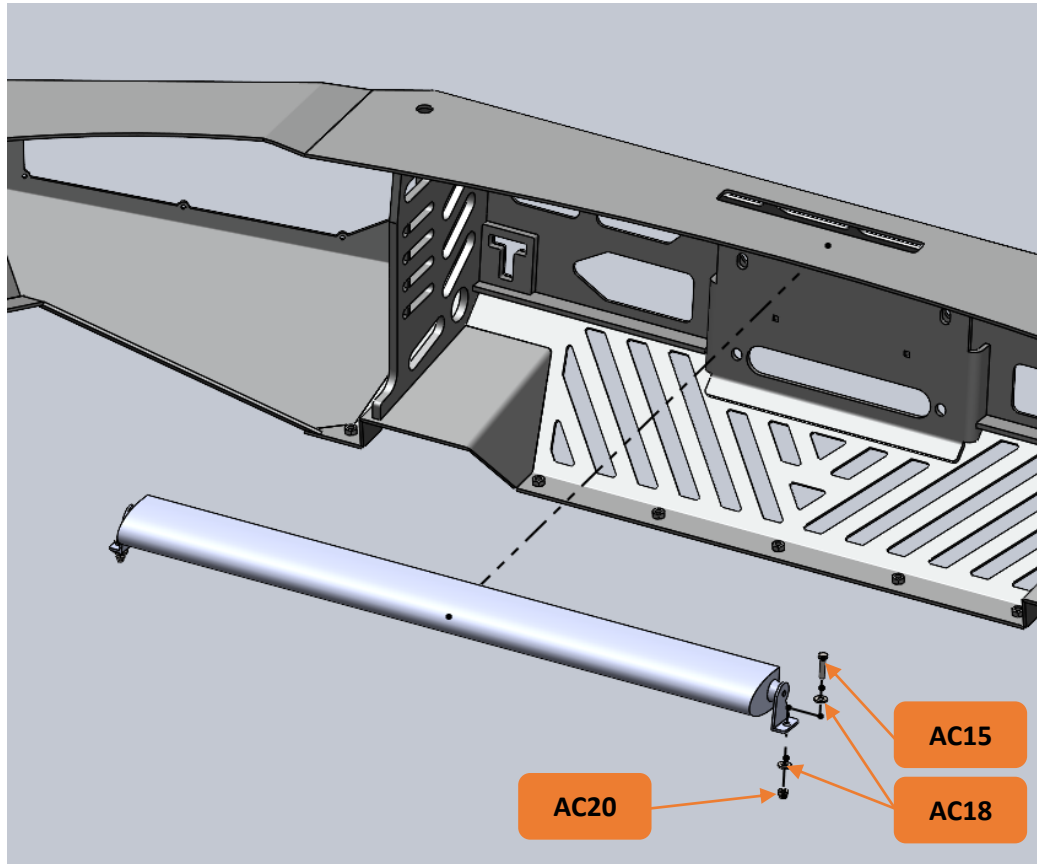
WI-020-R0

STEP 1: Install Brackets into the Car.



WI-020-R0

STEP 2.1: Install Single LED Bar into the Bull Bar Body, bolted with 2 positions.



AC15 x 02 pcs : Hex Head Bolt M6 x 25mmL x P1.0

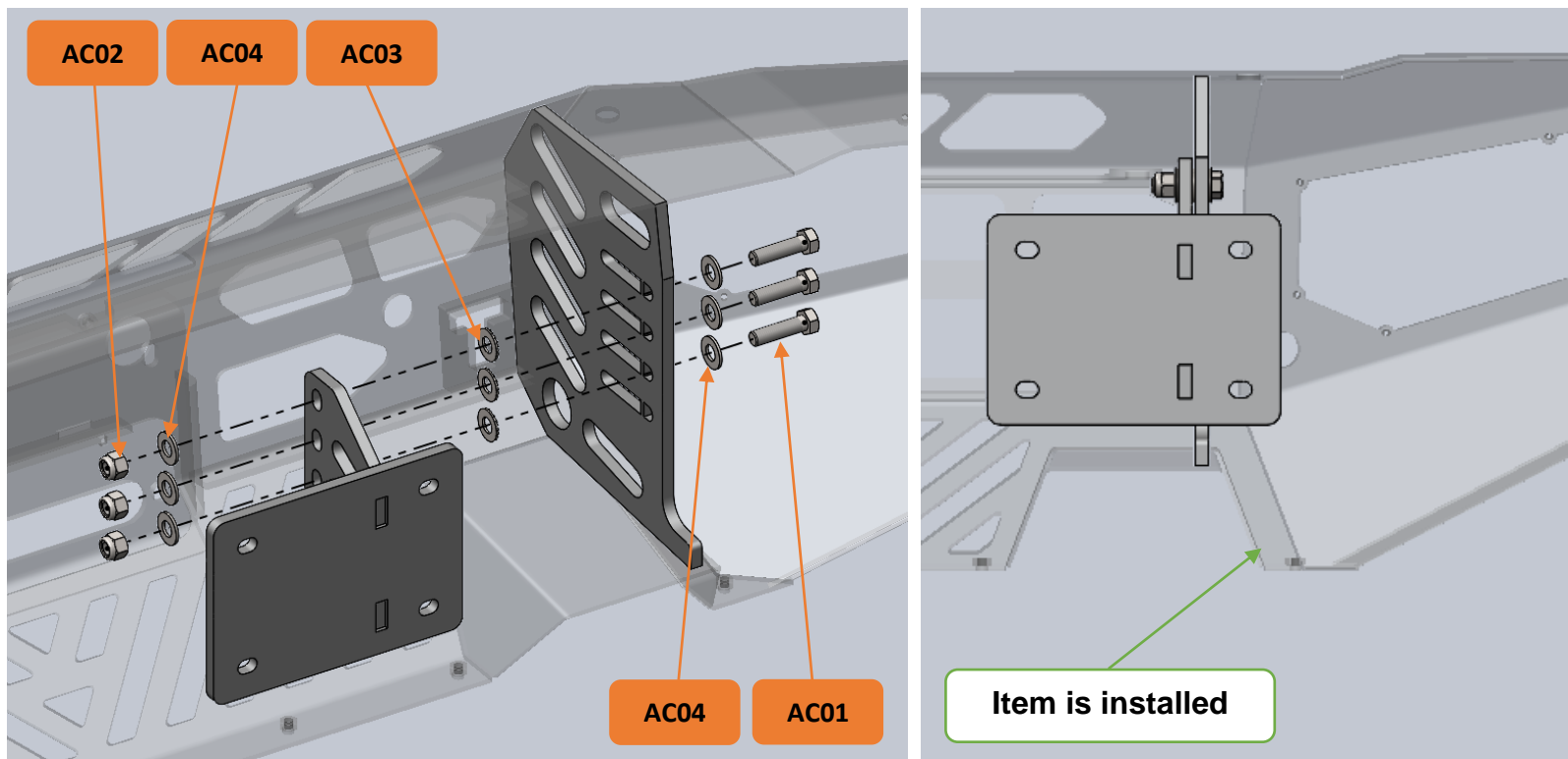
AC18 x 04 pcs : Steel Flat Washer M6 x 6.6mmID x 15mmOD x 2mmT

AC20 x 02 pcs : Steel Nyloc Nut M6 x P1.0

Bolt Tightening Torque: 10(Nm)

WI-020-R0

STEP 2.2: Install Bull Bar Body into the Car, bolted both sides with 8 positions.



AC01 x 06 pcs : Hex Head Bolt M12 x 45mmL x P1.25

AC02 x 06 pcs : Nyloc Nut M12 x P1.25

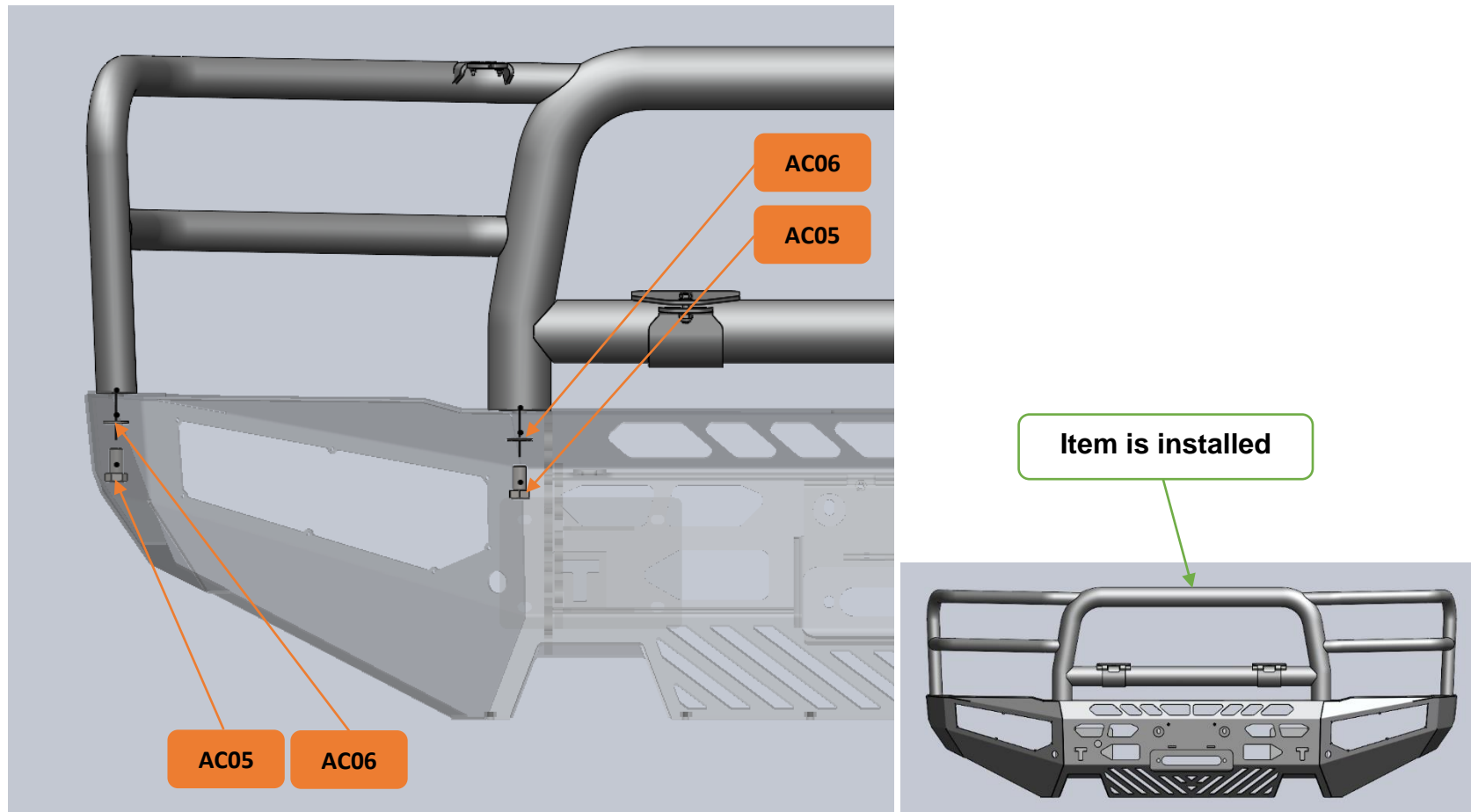
AC03 x 06 pcs : Steel Nord Lock Washer M12 x 13mmID x 19mmOD x 2.2mmT

AC04 x 12 pcs : Steel Flat Washer M12 x 13mmID x 26mmOD x 2.2mmT

Bolt Tightening Torque: 88(Nm)

WI-020-R0

STEP 3.1: Install 3 Hoop into the Car, bolted with 4 positions. **[Use for 3 Hoop only]**



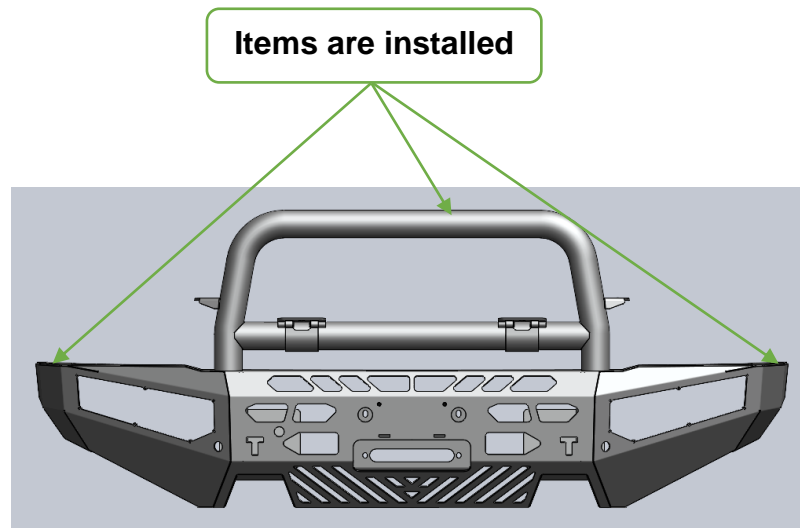
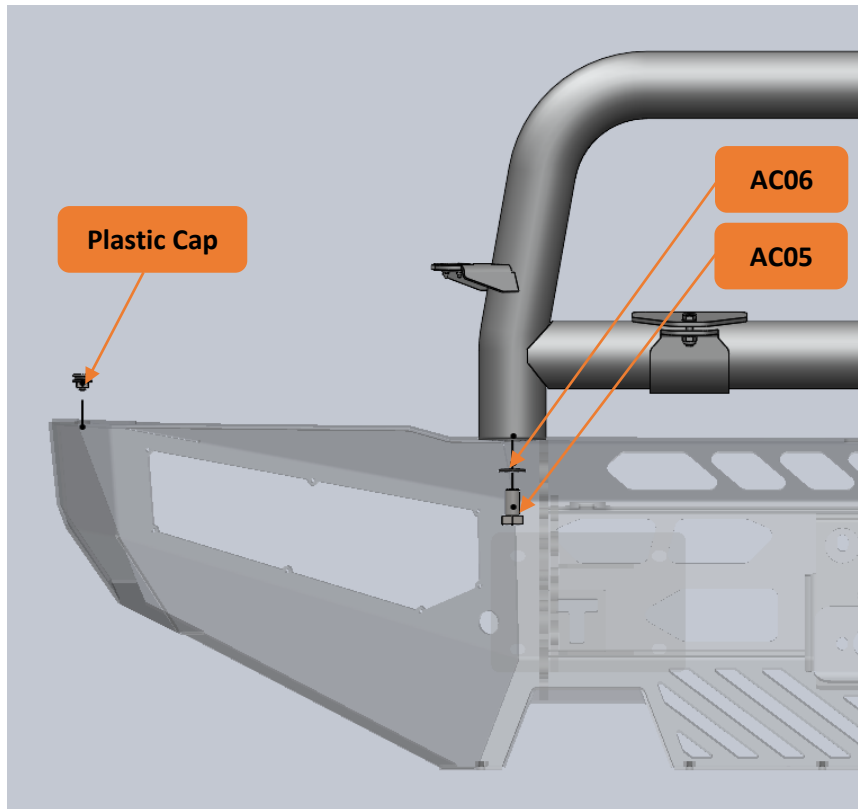
AC05 x 04 pcs : Hex Head Bolt M16 x 30mmL x P2.0

AC06 x 04 pcs : Steel Flat Washer M16 x 17mmID x 30mmOD x 2.5mmT

Bolt Tightening Torque: 88(Nm)

WI-020-R0

STEP 3.2: Install Single Hoop & Plastic Cap into the Car, bolted with 4 positions. **[Use for Single Hoop only]**



Plastic Cap x 02 pcs

Bolt Tightening Torque: 3(Nm)

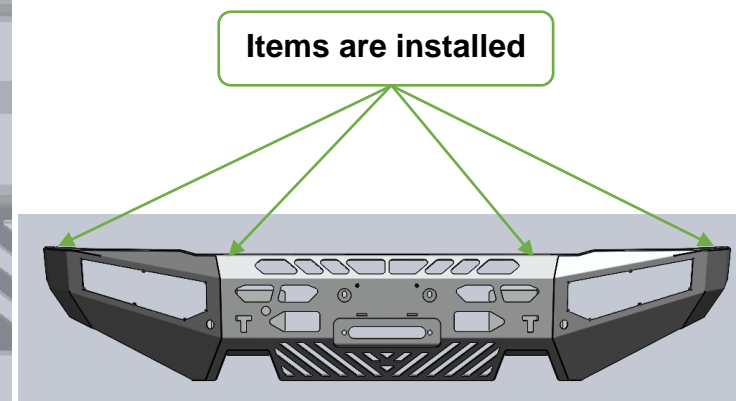
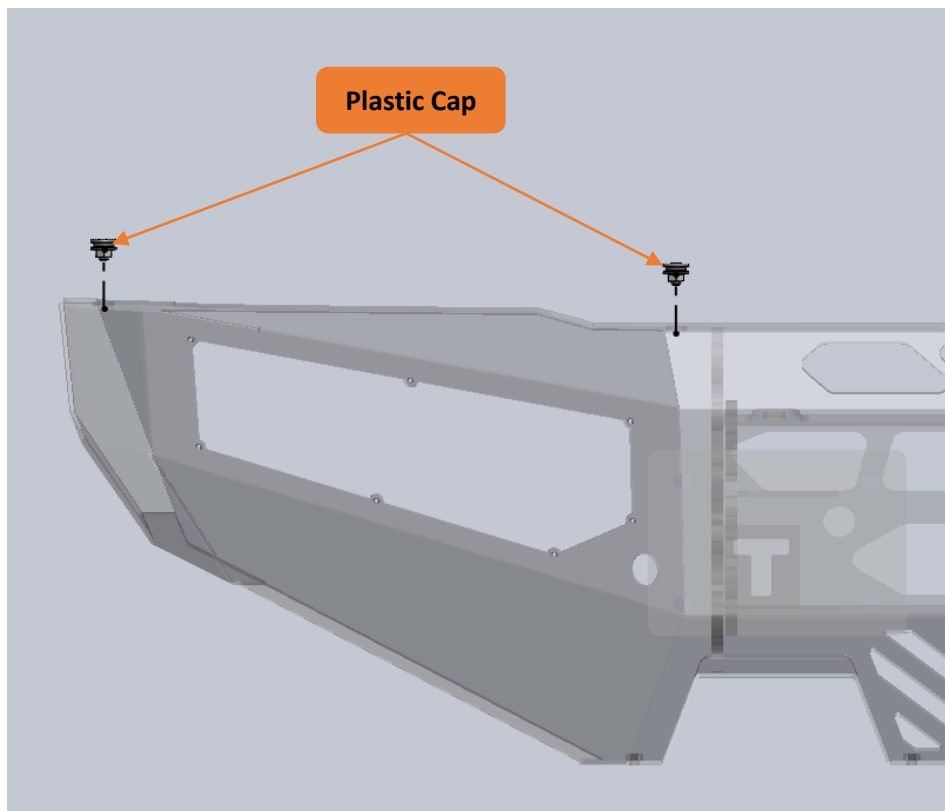
AC05 x 02 pcs : Hex Head Bolt M16 x 30mmL x P2.0

AC06 x 02 pcs : Steel Flat Washer M16 x 17mmID x 30mmOD x 2.5mmT

Bolt Tightening Torque: 88(Nm)

WI-020-R0

STEP 3.3: Install Plastic Cap into the Car, bolted with 4 positions. **[Use for No Hoop only]**

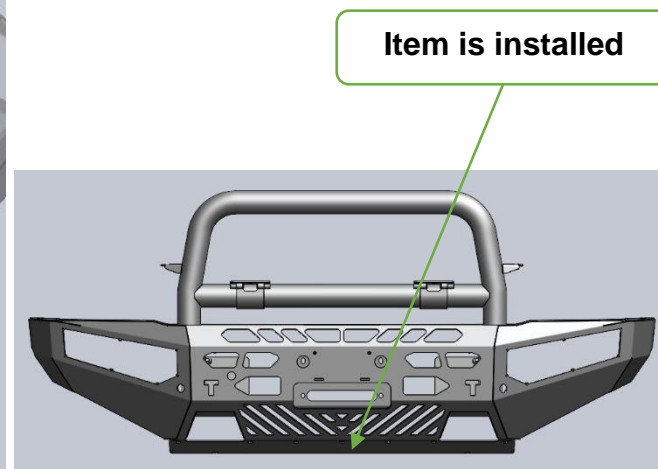
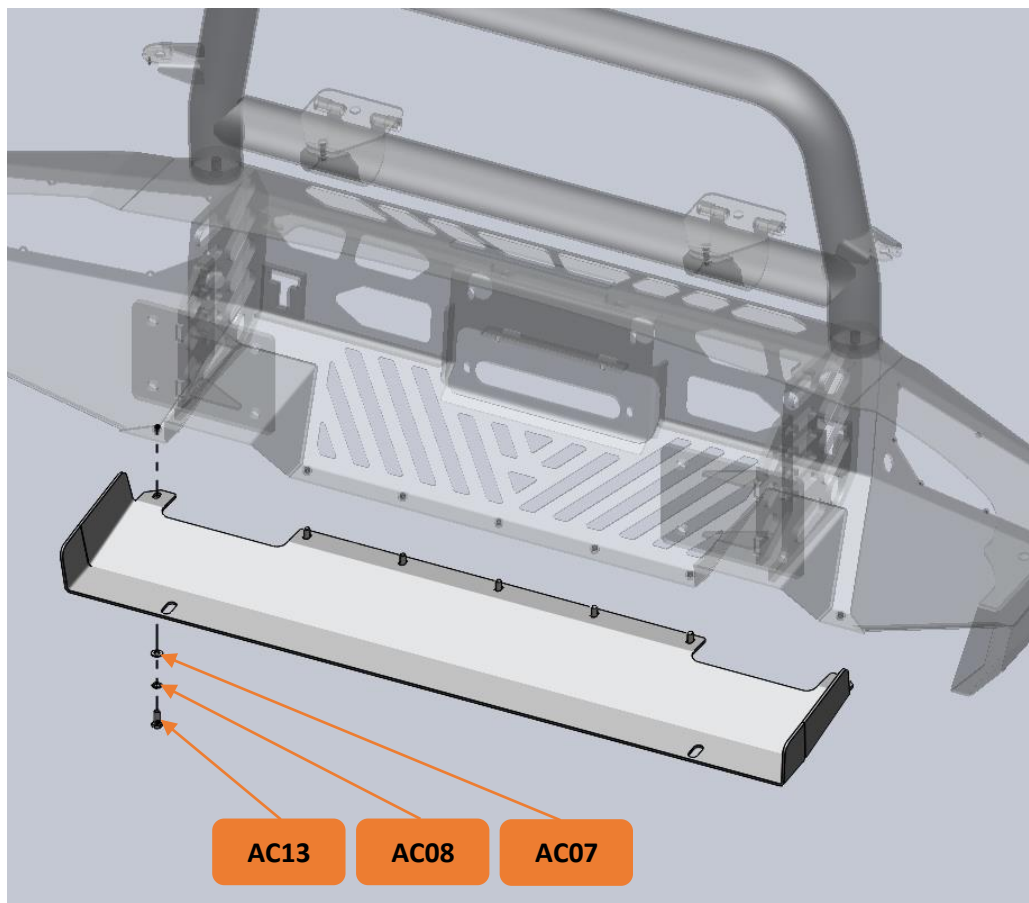


Plastic Cap x 04 pcs

Bolt Tightening Torque: 3(Nm)

WI-020-R0

STEP 4: Install Bottom Plate into the Car, bolted with 7 positions.



AC07 x 07 pcs : Steel Flat Washer M8 x 8.4mmID x 17mmOD x 2.5mmT

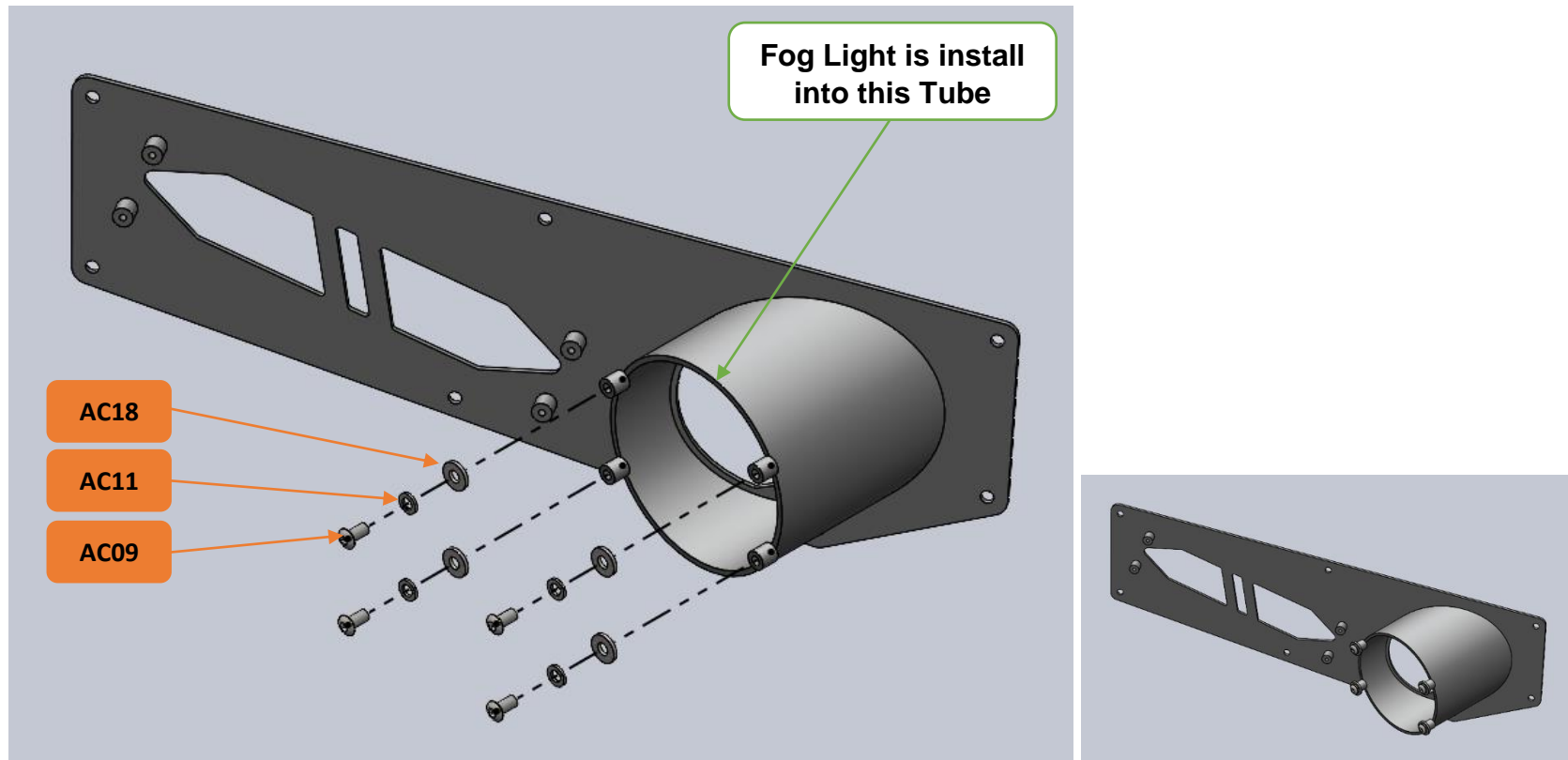
AC08 x 07 pcs : Steel Spring Washer M8

AC13 x 07 pcs : Hex Head Bolt M8 x 20mmL x P 1.25

Bolt Tightening Torque: 24(Nm)

WI-020-R0

STEP 5.1: Install Fog Light into Light Panel LH & RH, bolted both side with 8 positions.



AC31 x 01 pcs : Fog Lights (Pair) with Accessories

AC09 x 08 pcs : M6 x 12mmL x P1 Steel Hex Socket (allen Key) & Domed Head Bolt

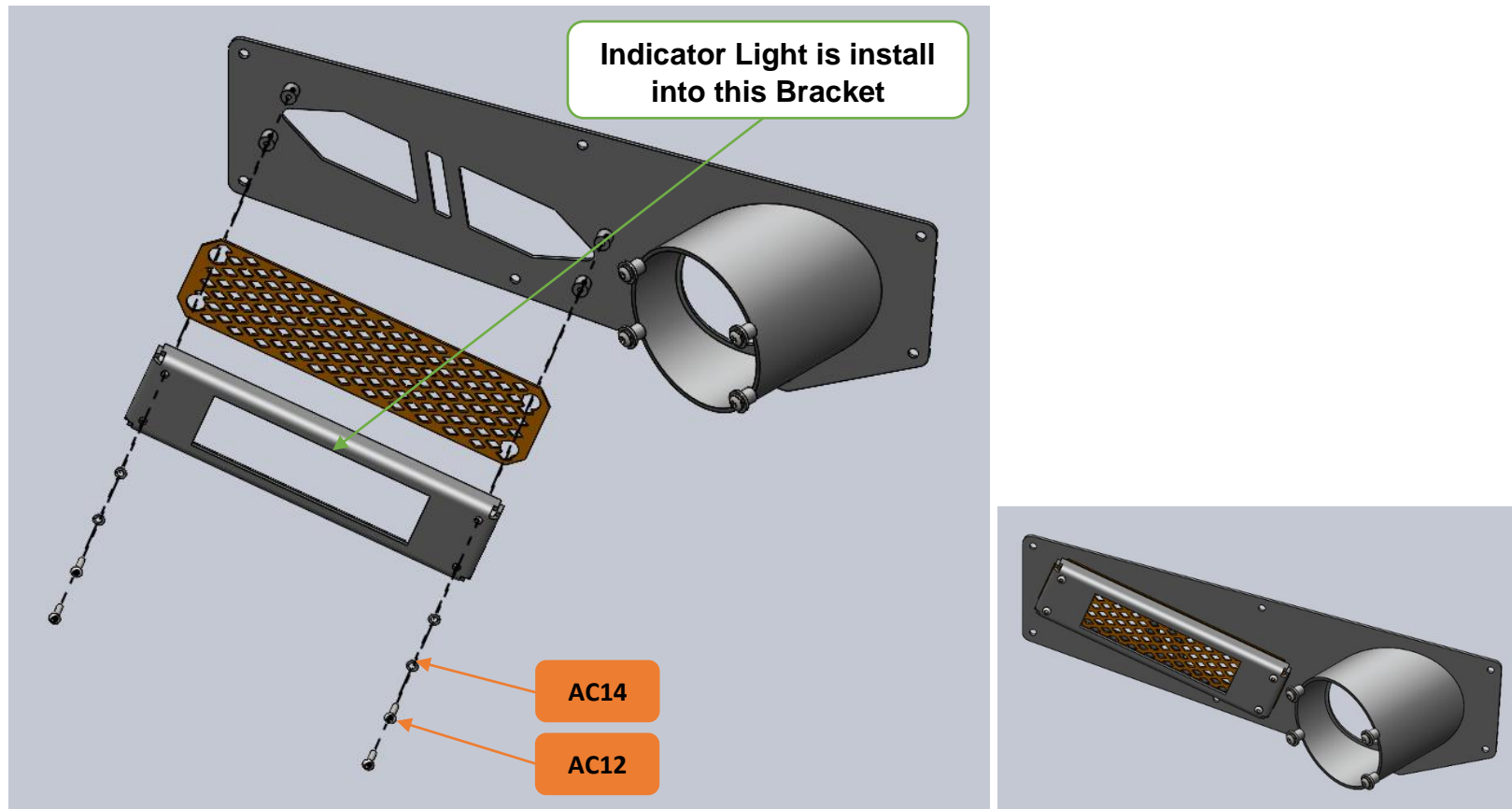
AC11 x 08 pcs : Steel Spring Washer M6

AC18 x 08 pcs : Steel Flat Washer M6 x 6.6mmID x 15mmOD x 2mmT

Bolt Tightening Torque: 10(Nm)

WI-020-R0

STEP 5.2: Install Indicator Light into Light Panel LH & RH, bolted both side with 8 positions.



AC32 x 01 pcs : Indicator Lights (Pair)

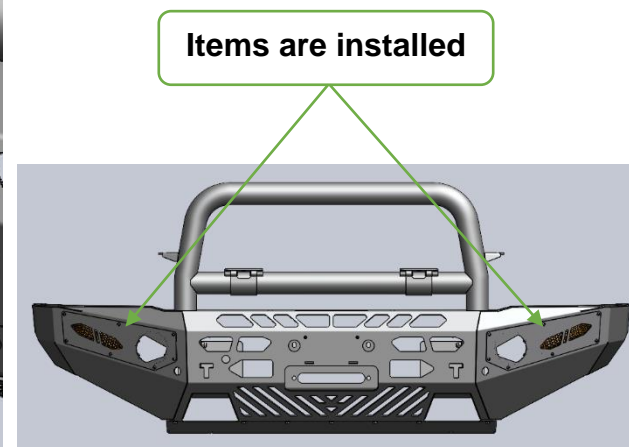
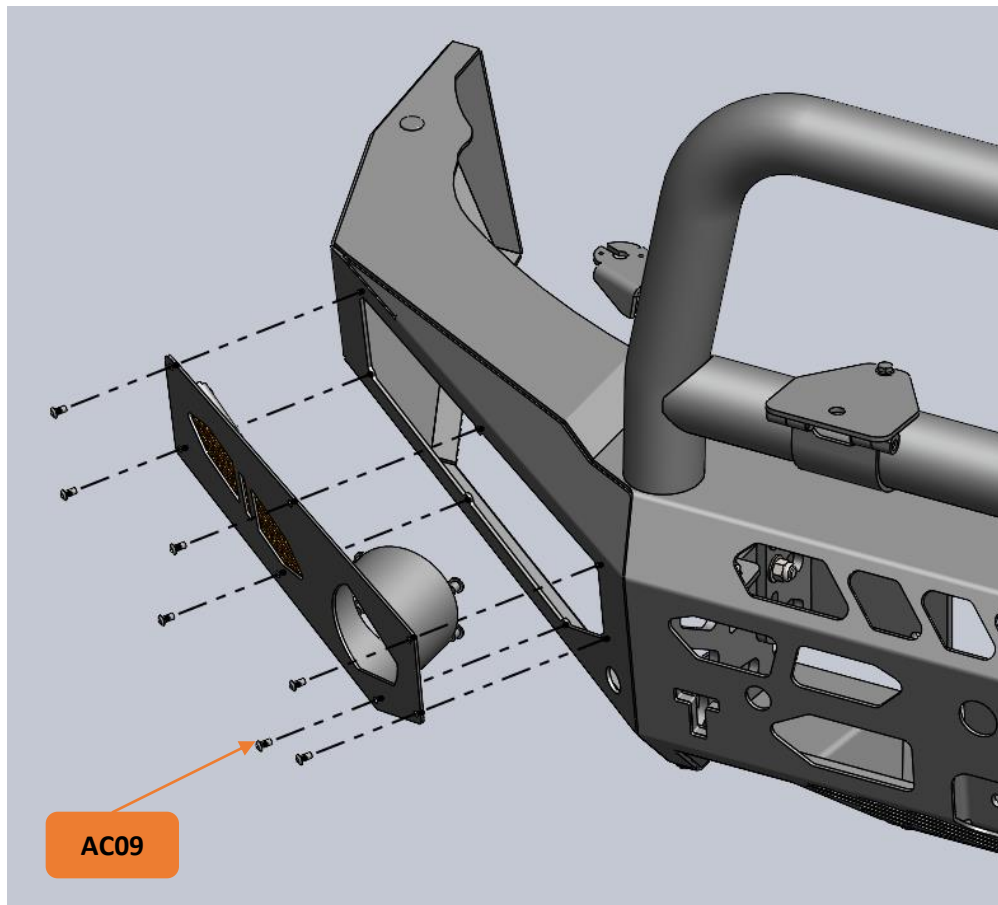
AC12 x 08 pcs : M4 x 16mmL x P0.7 Hex Socket (allen Key) & Domed Head Bolt

AC14 x 08 pcs : Steel Spring Washer M4

Bolt Tightening Torque: 3(Nm)

WI-020-R0

STEP 5.3: Install Light Panel LH & RH, bolted both sides with 14 positions.

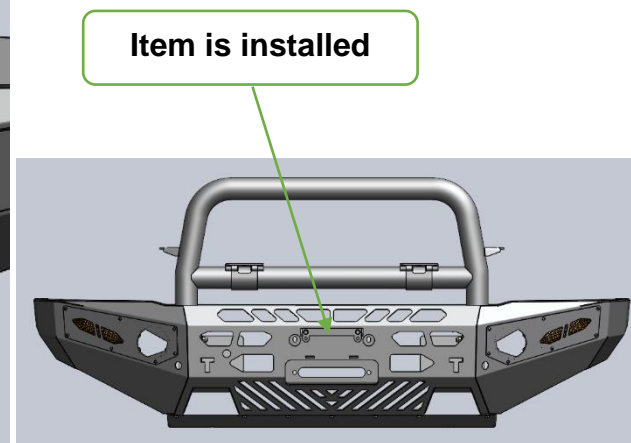
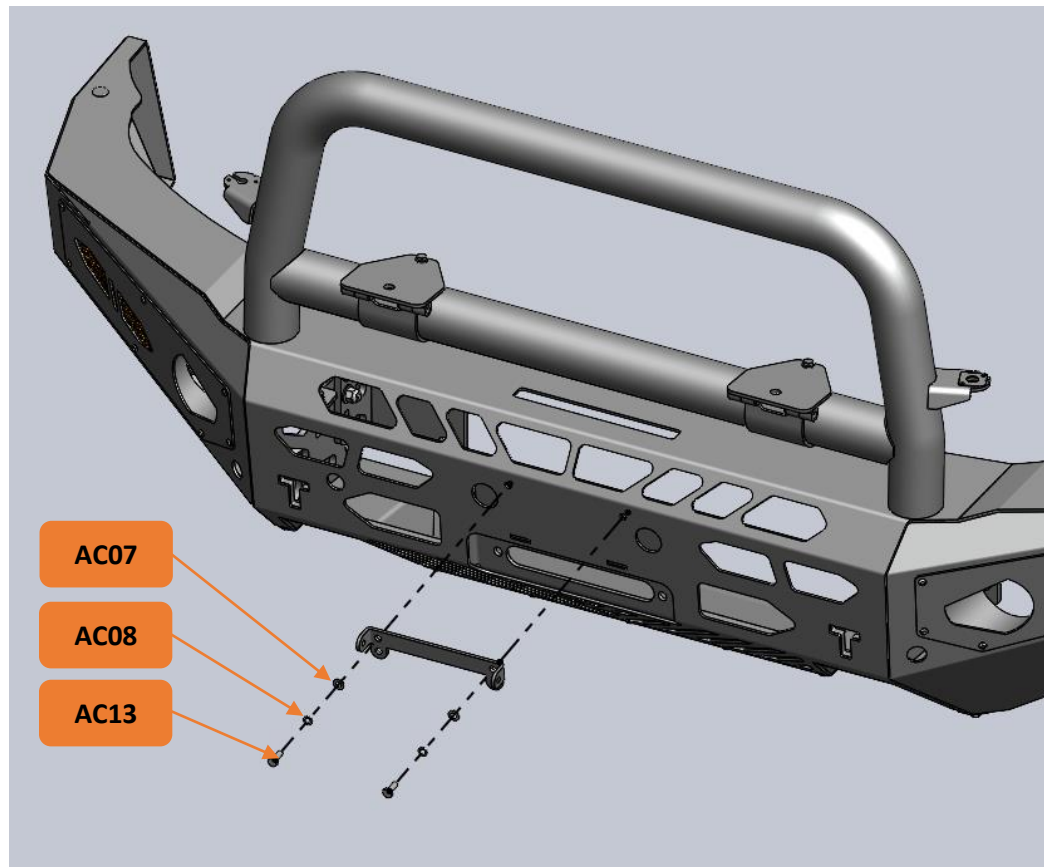


AC09 x 14 pcs : M6 x 12mmL x P1 Steel Hex Socket (allen Key) & Domed Head Bolt

Bolt Tightening Torque: 10(Nm)

WI-020-R0

STEP 6.1: Install License Bracket into Bull Bar, bolted with 2 positions.



AC07 x 02 pcs : Steel Flat Washer M8 x 8.4mmID x 17mmOD x 2.5mmT

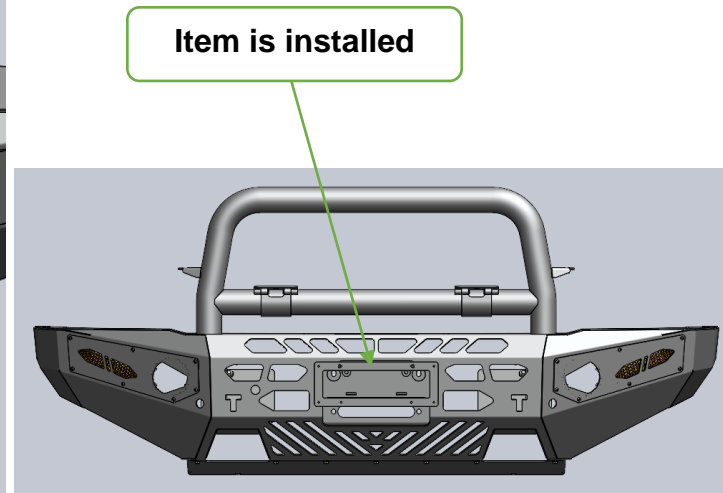
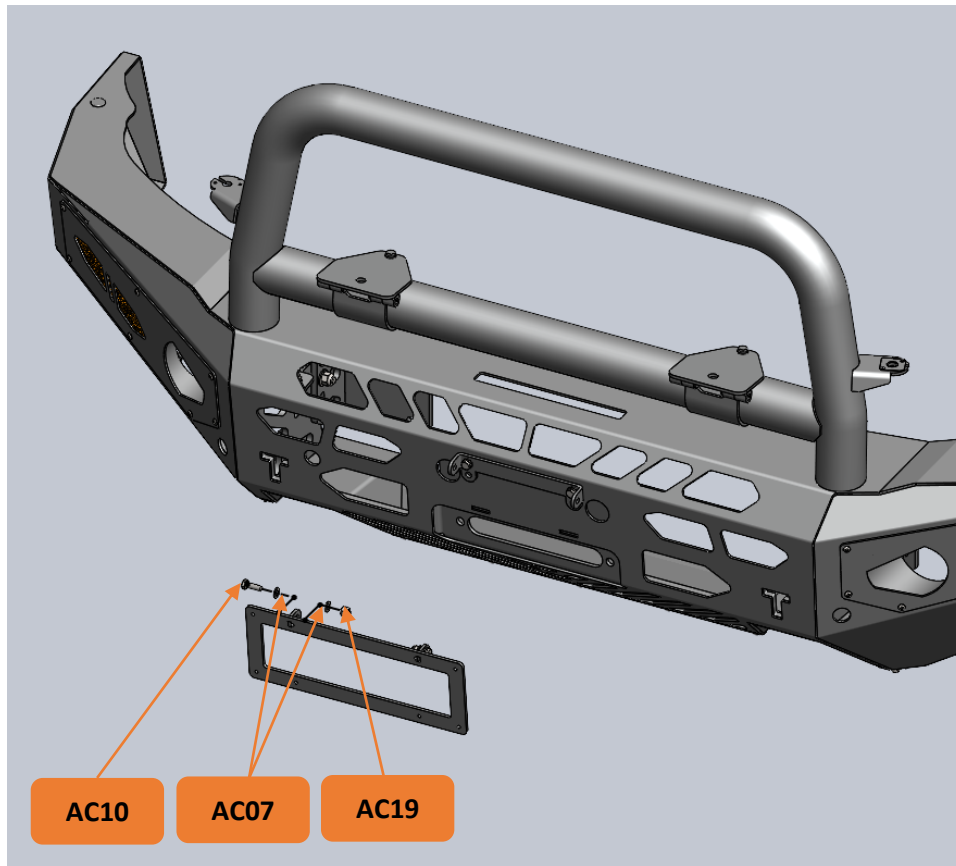
AC08 x 02 pcs : Steel Spring Washer M8

AC13 x 02 pcs : Hex Head Bolt M8 x 20mmL x P 1.25

Bolt Tightening Torque: 24(Nm)

WI-020-R0

STEP 6.2: Install License Plate Bracket, bolted with 2 positions.



AC07 x 04 pcs : Steel Flat Washer M8 x 8.4mmID x 17mmOD x 2.5mmT

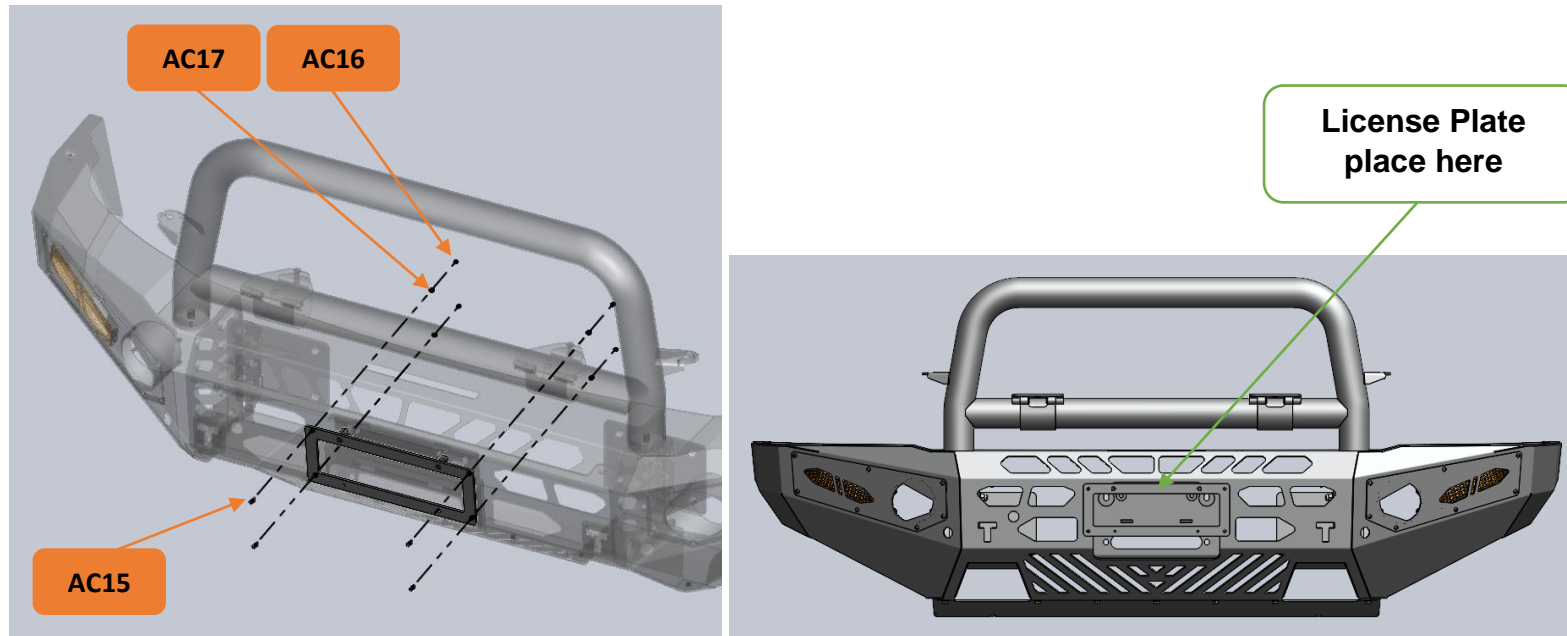
AC10 x 02 pcs : Hex Head Bolt M8 x 25mmL x P1.25

AC19 x 02 pcs : Nyloc Nut M8 x P1.25

Bolt Tightening Torque: 24(Nm)

WI-020-R0

STEP 6.3: Install License Plate into the Bracket, bolted with 4 positions.



AC15 x 04 pcs : M4 x 16mmL x P0.7 Hex socket (allen Key) & Domed Head Bolt

AC16 x 04 pcs : Steel Flat Washer M4 x 4.3mmID x 9mmOD x 0.8mmT

AC17 x 04 pcs : Nyloc Nut M4 x P0.7

Bolt Tightening Torque: 3(Nm)

Recommendation:

Due to the variation of vehicle chassis some shimming may be required by using the extra washers supplied (**AC04**) to assist in lining up the bar where required.

----- END -----